

1a

EllePuls®
NÄH DEINEN STIL

Kontrollkästchen

5 × 5 cm

Größen



S



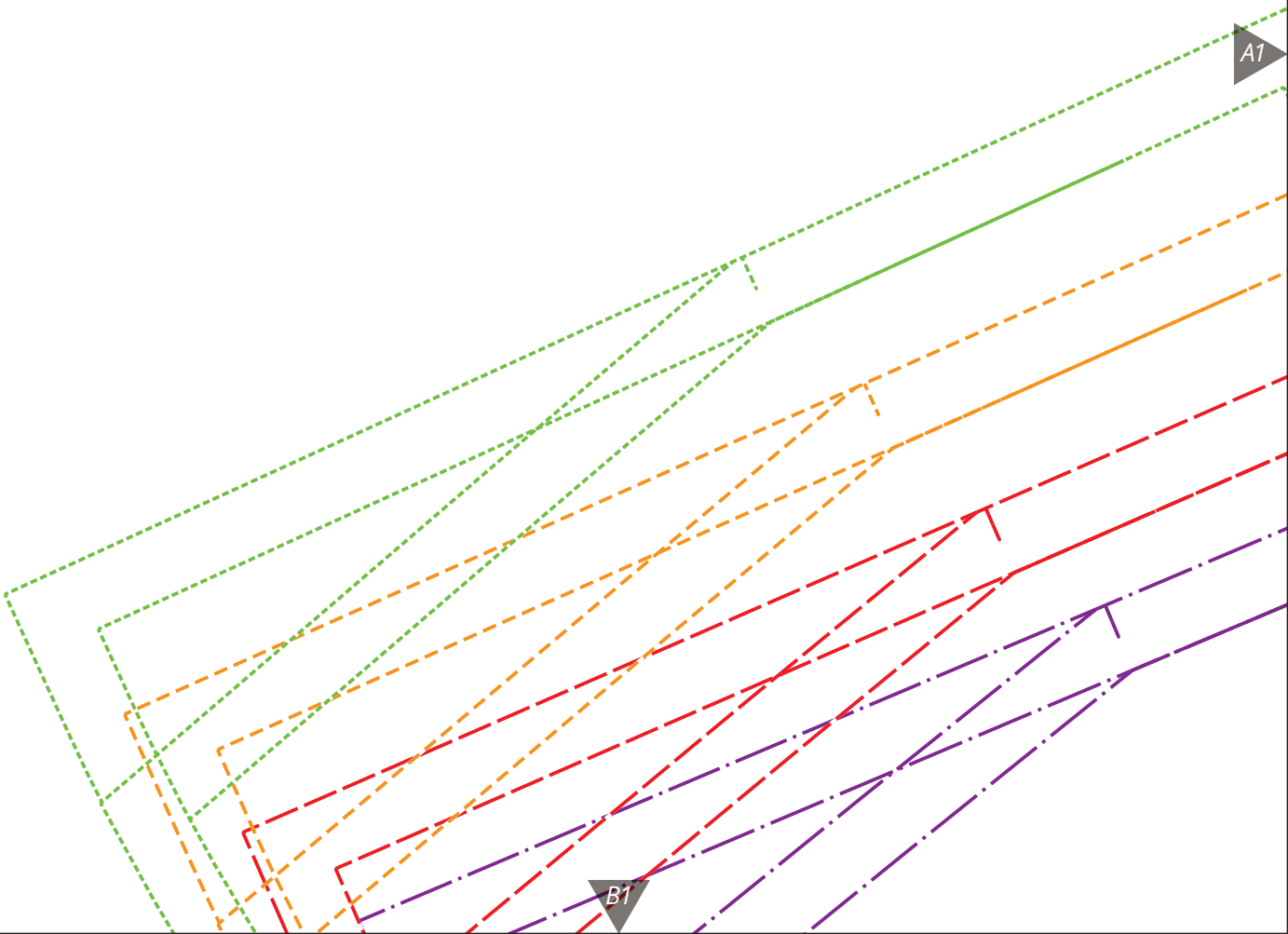
M



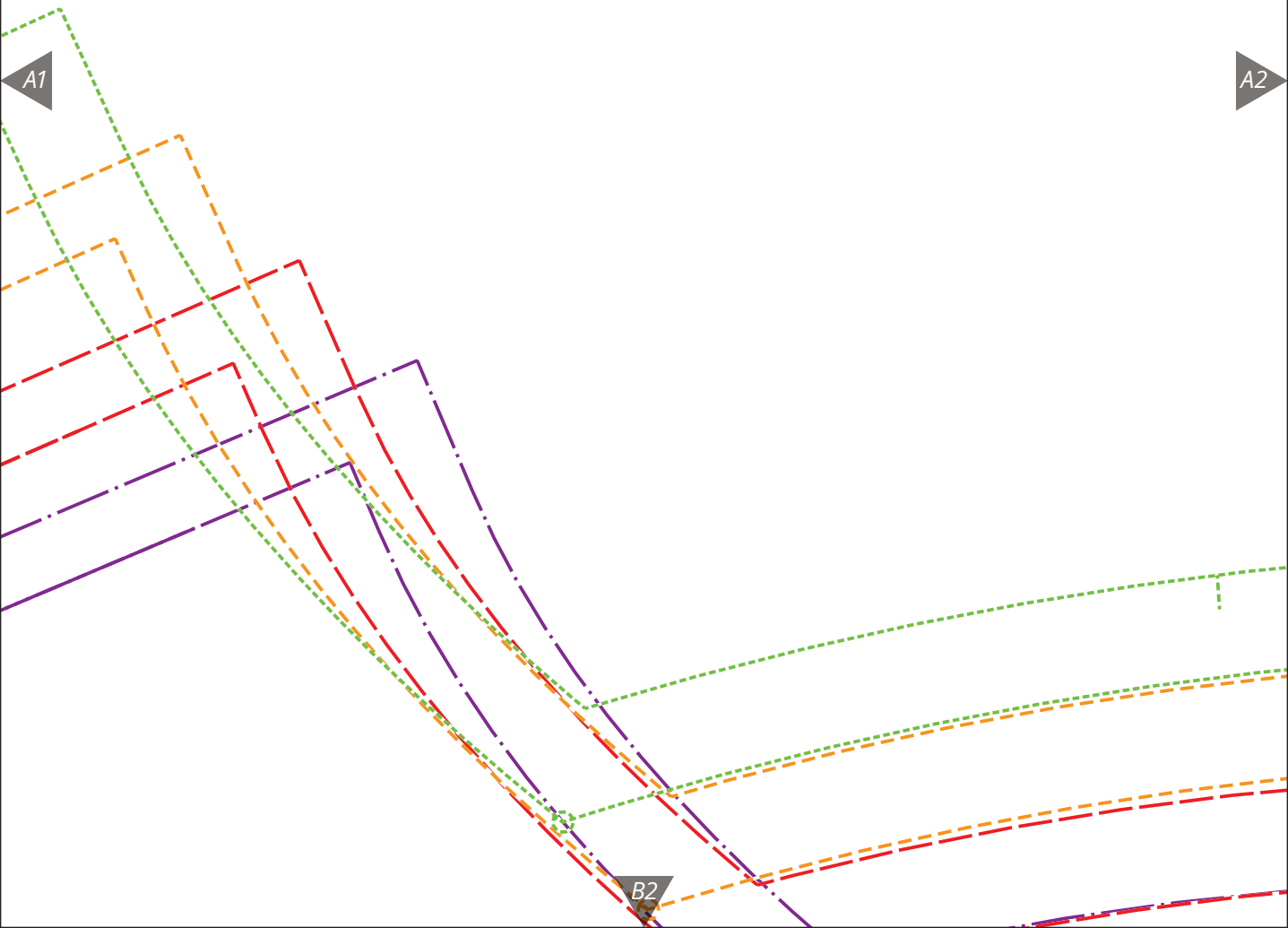
L



XL



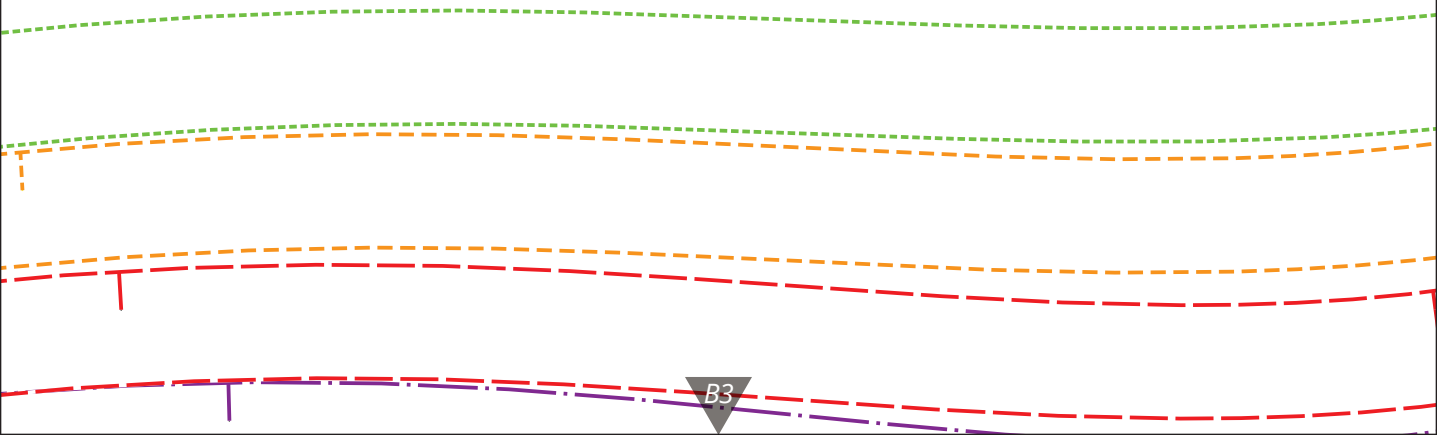
1b



1c

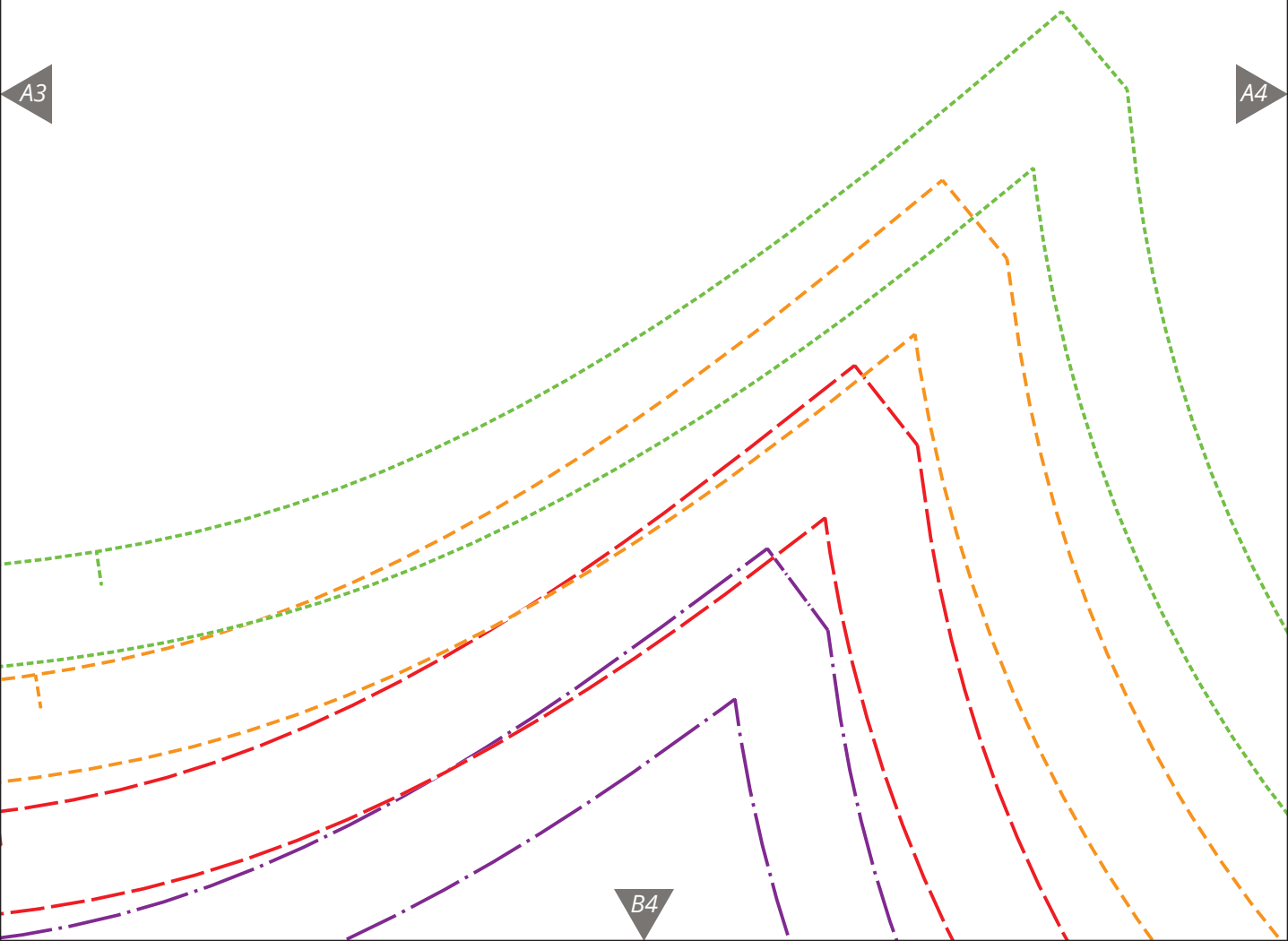
A2

A3



B3

1d

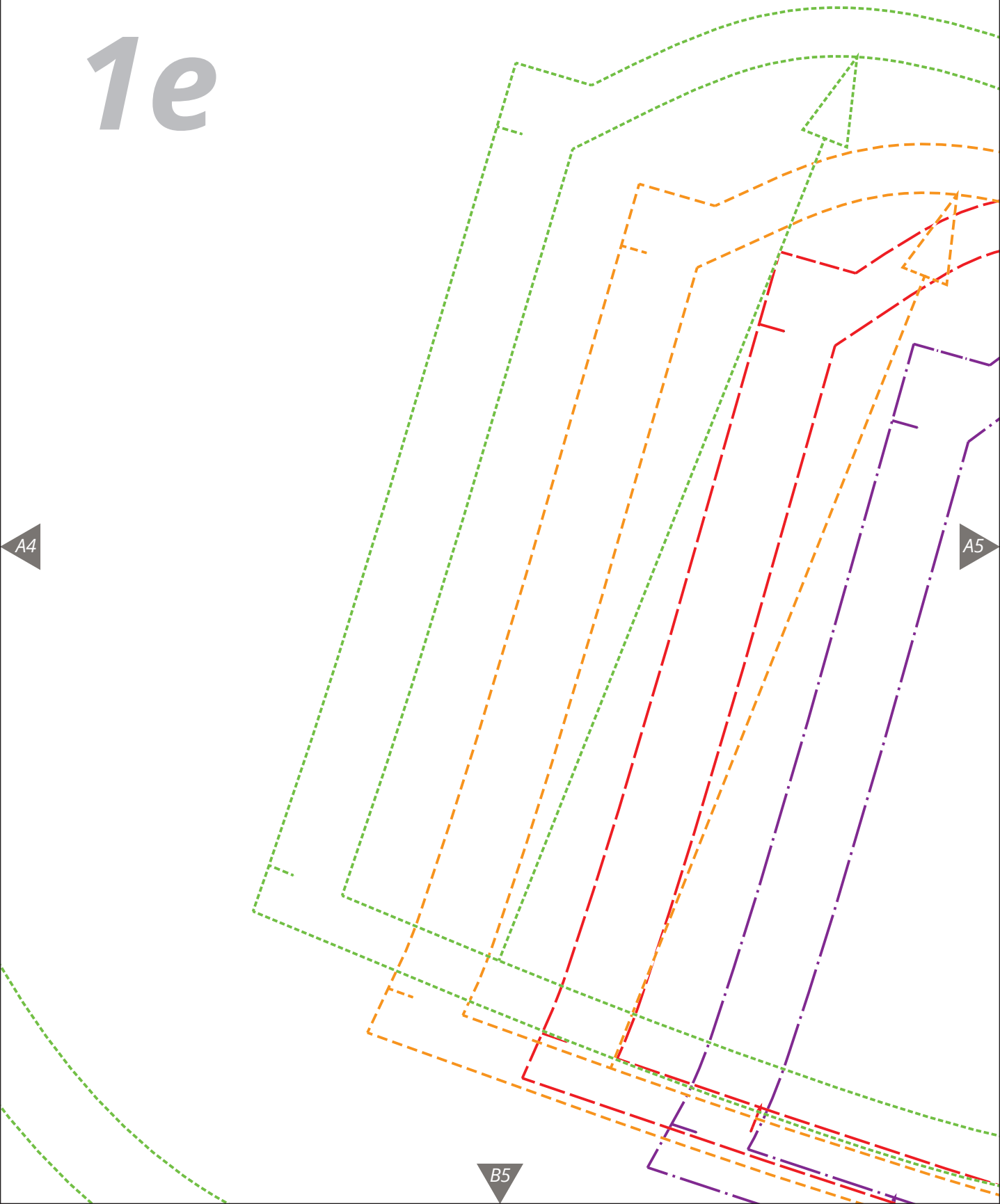


1e

A4

A5

B5



1f

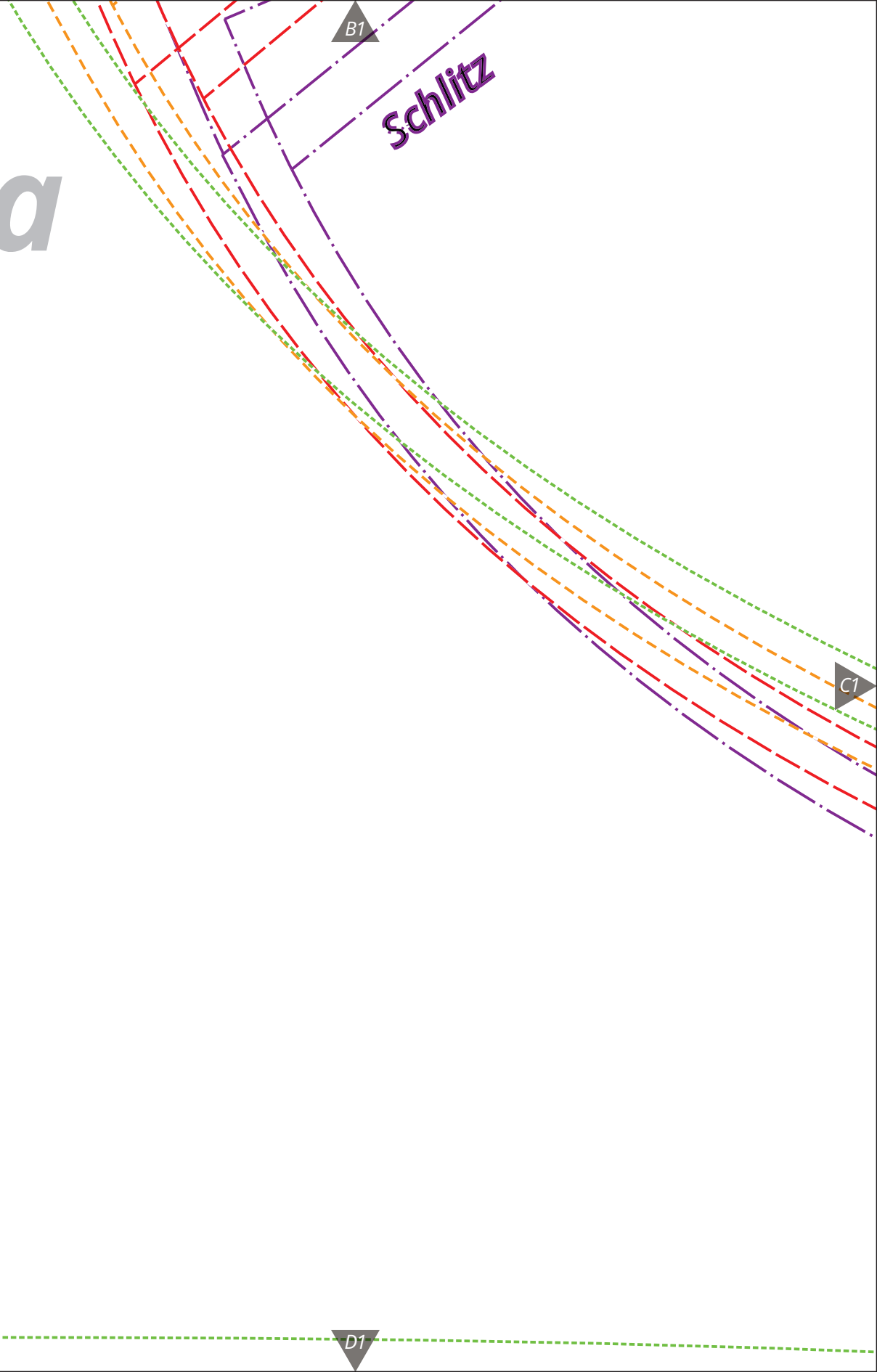
A5
EllePuls®
NÄH DEINEN STIL

CAPE TOWN
Taschenbeutel
2 x aus Außenstoff
2 x aus Futter davon 1 x gegengleich,
oder 4 x aus Futterstoff
Nahtzugabe ist enthalten

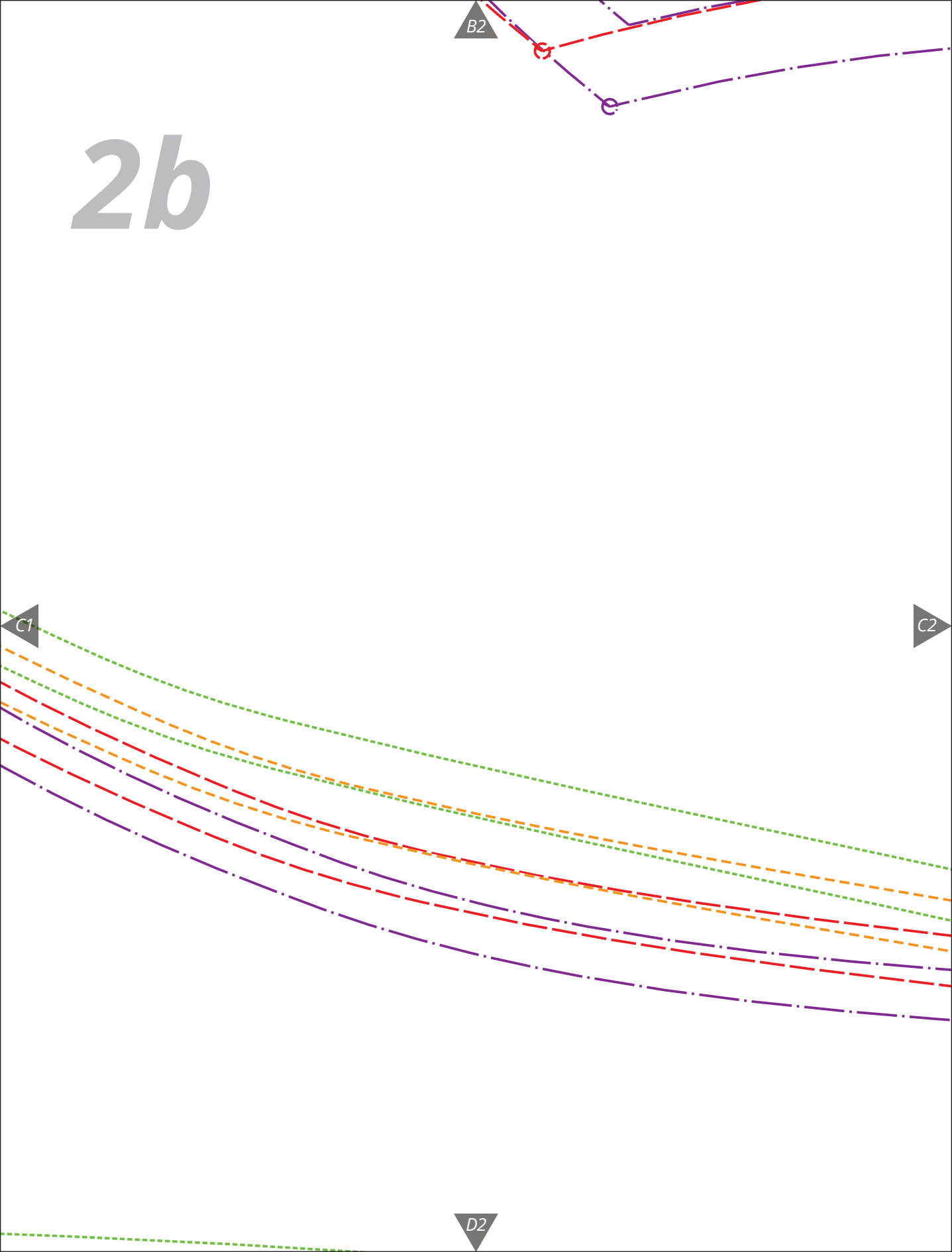
E

B6

2a



2b



B3

2c

Elefants[®]
NÄH DEINEN STIL

CAPE TOWN
Vorderteil

2 x zuschneiden
(1x gegengleich)

Nahtzugabe ist enthalten

C2

C3

D3

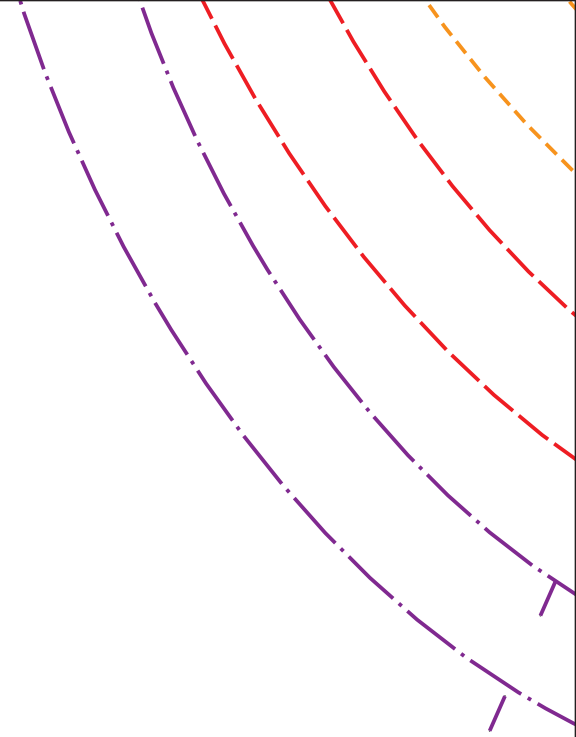
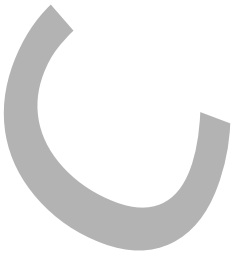
2d

B4

D4

C3

C4



B5

2e

Tascheneingriff

C4

C5

D5

B6

2f

C5

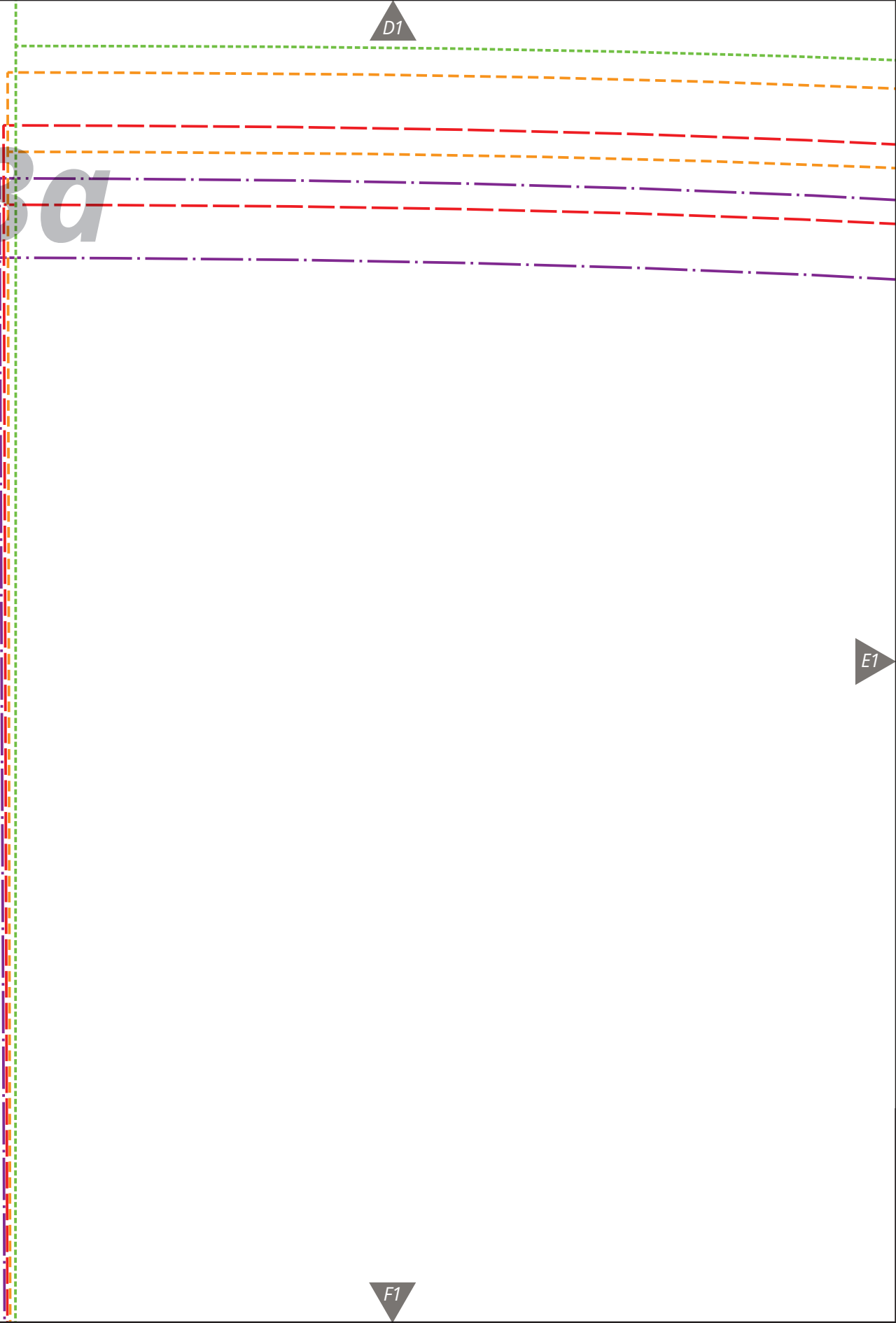
D6

D1

3a

E1

F1



D2

3b

annahmen

E1

E2

F2

D3

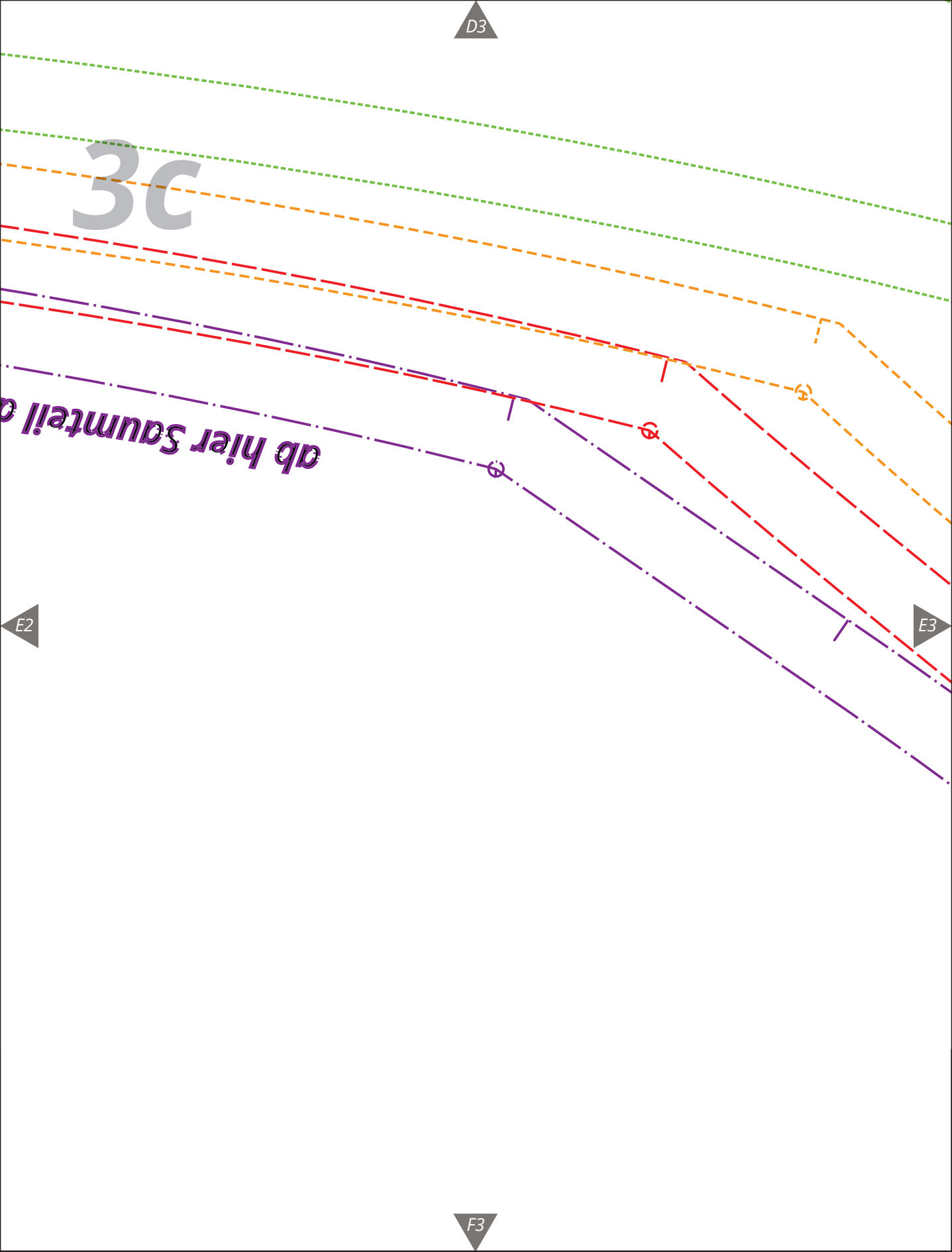
3c

ab hier Saumteil

E2

E3

F3



D4

3d

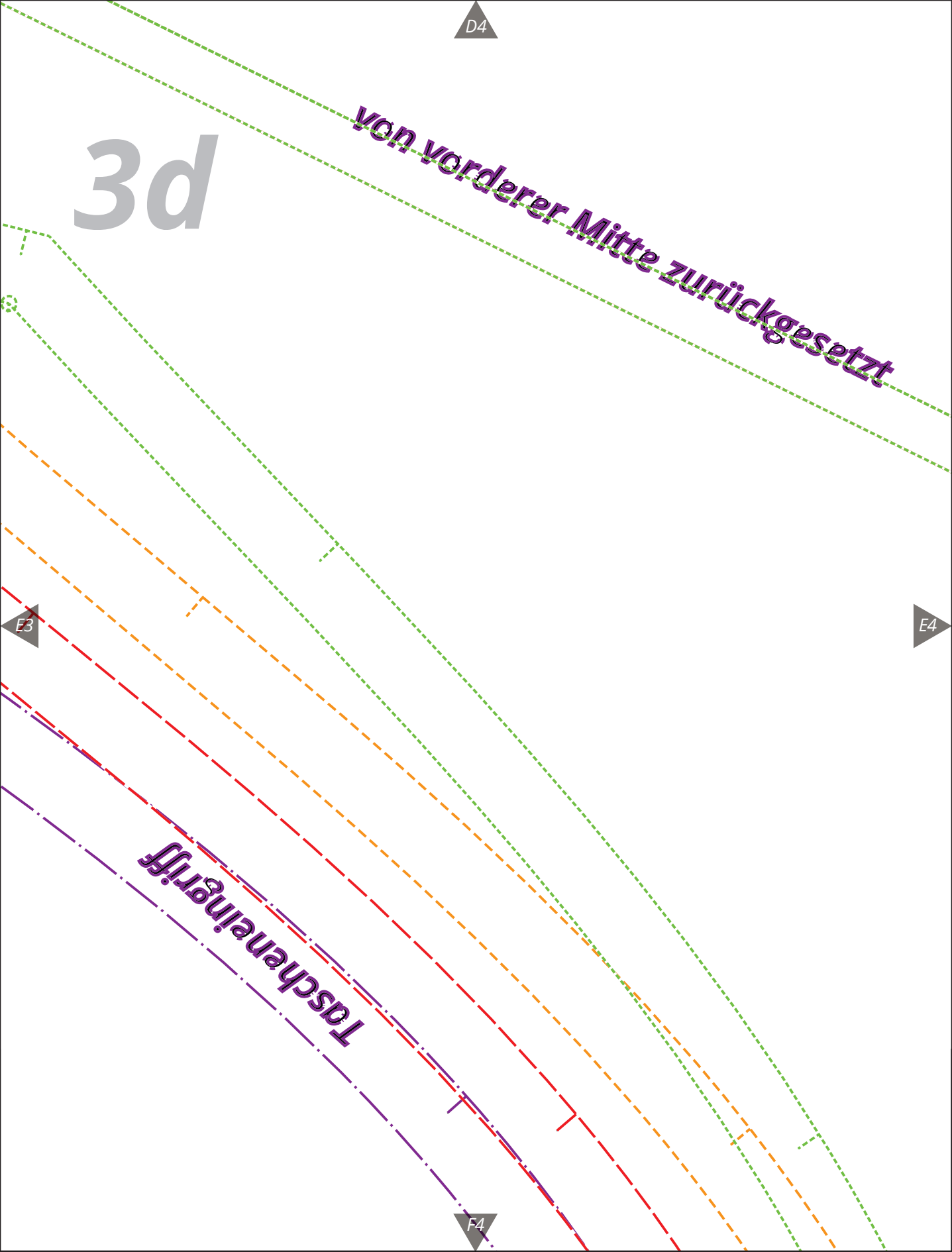
von vorderer Mitte zurückgesetzt

E3

E4

Tascheneingriff

F4



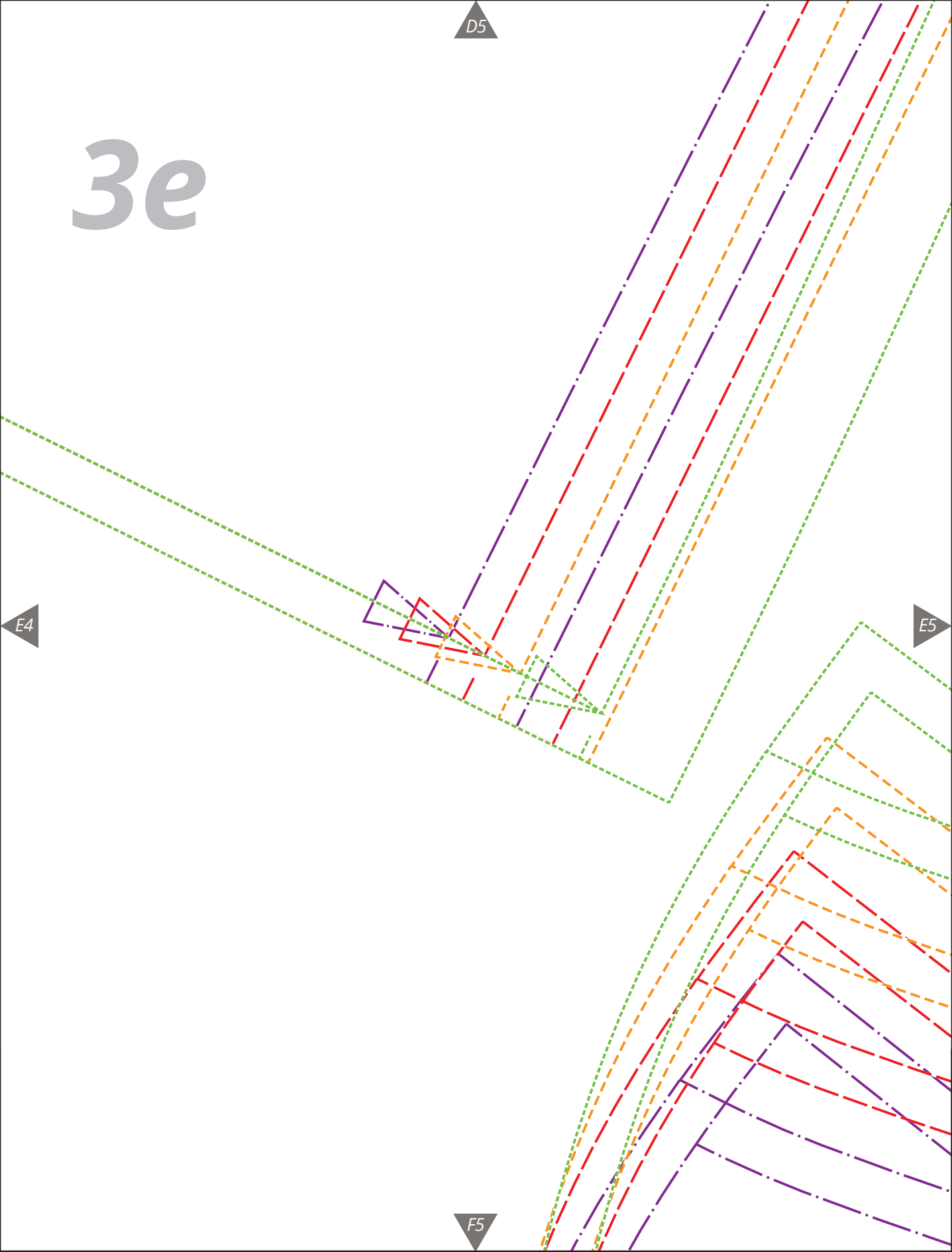
3e

D5

E4

E5

F5



D6

3f

E5

F6



F1

4a

HM Bruch FD_L
oder wahlweise Naht

G1

H1

F2

4b



G1

G2

H2

F3

4c



G2

G3

H3

4d

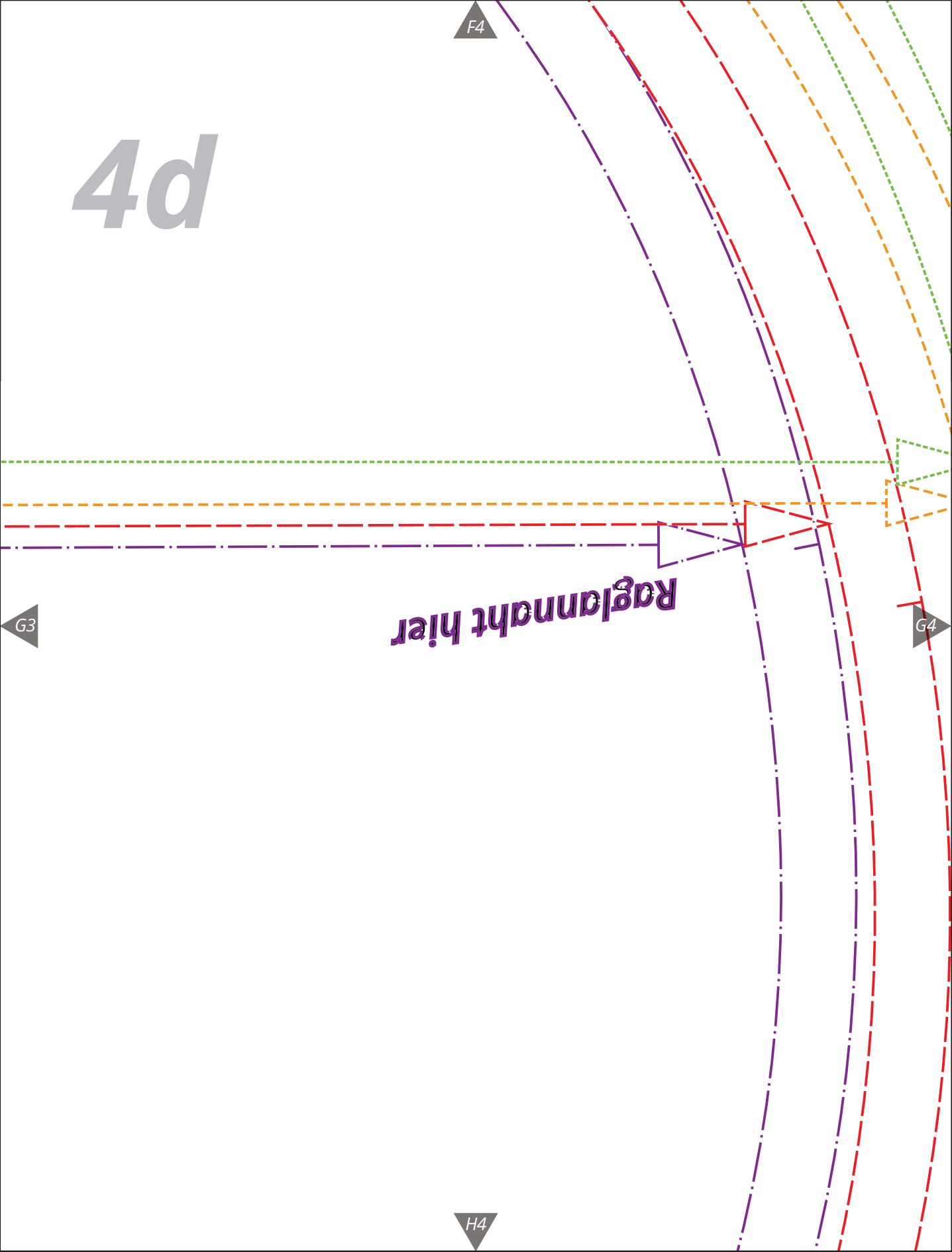
F4

G3

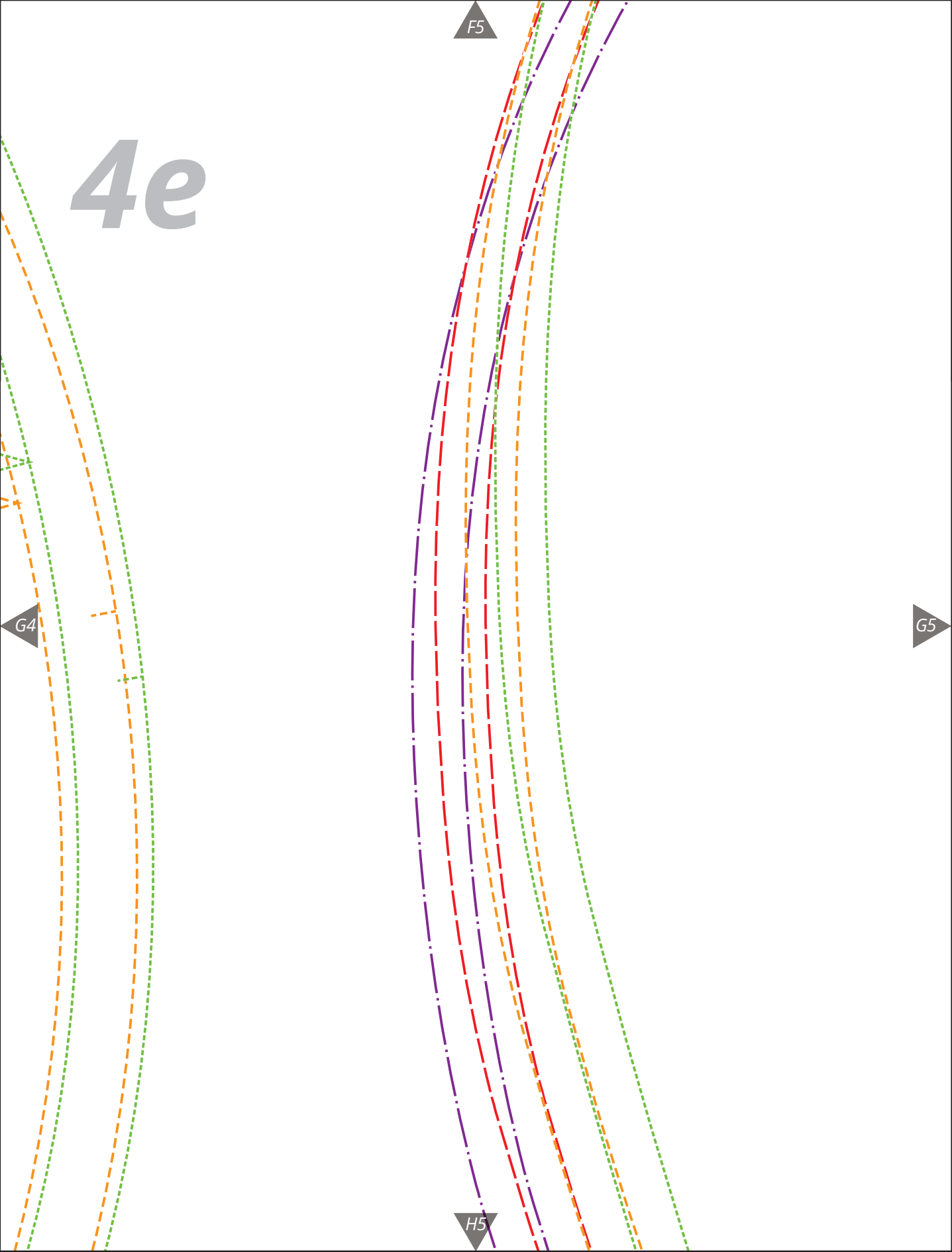
Raglannaht hier

G4

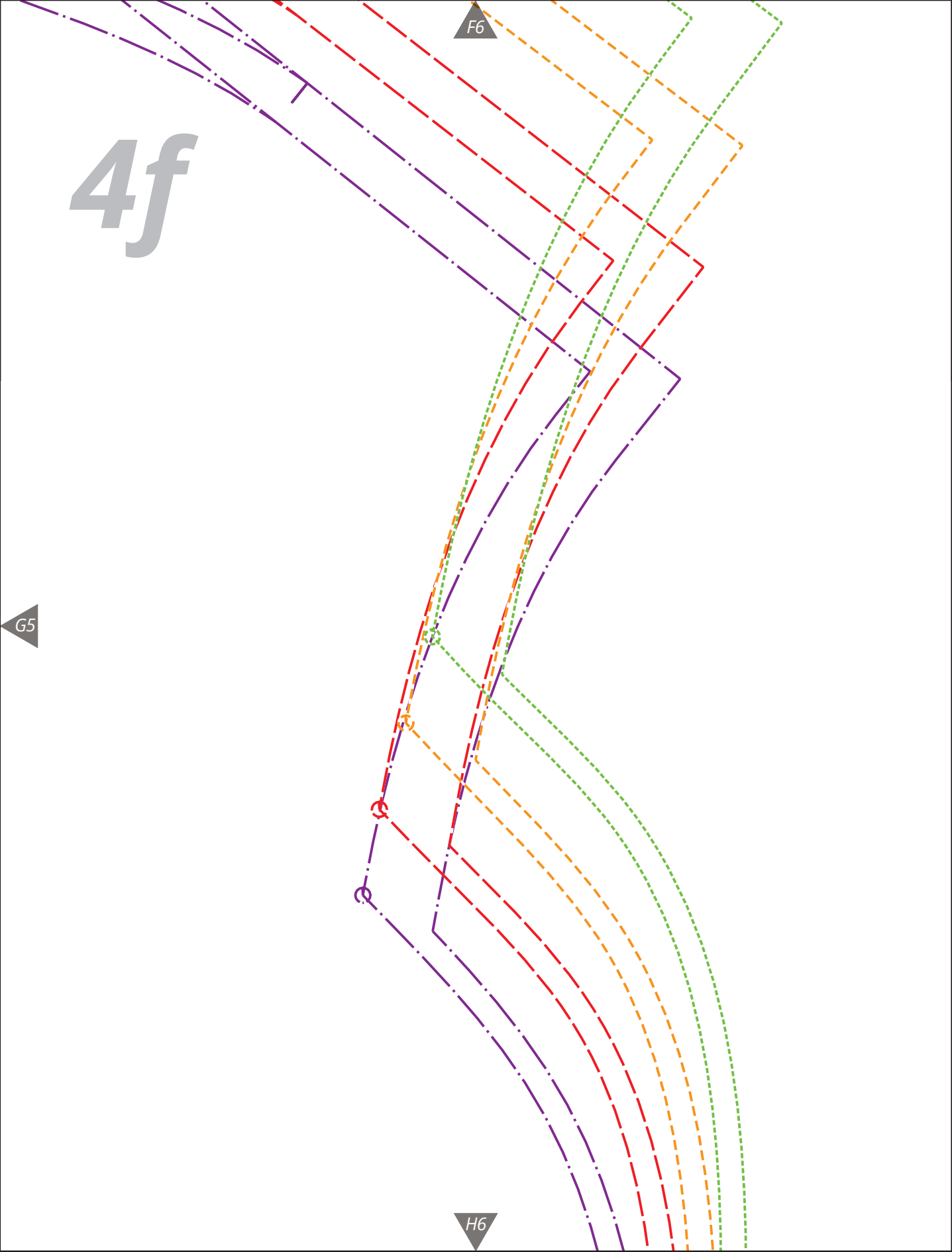
H4



4e



4f

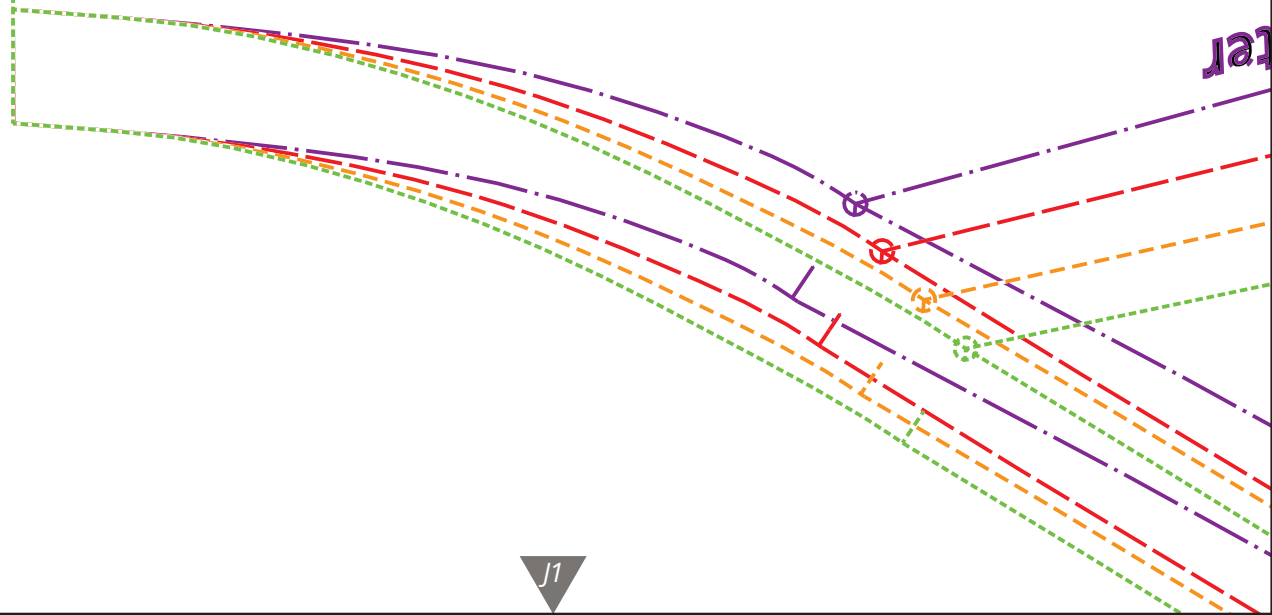


H1

5a

17

ter



J1

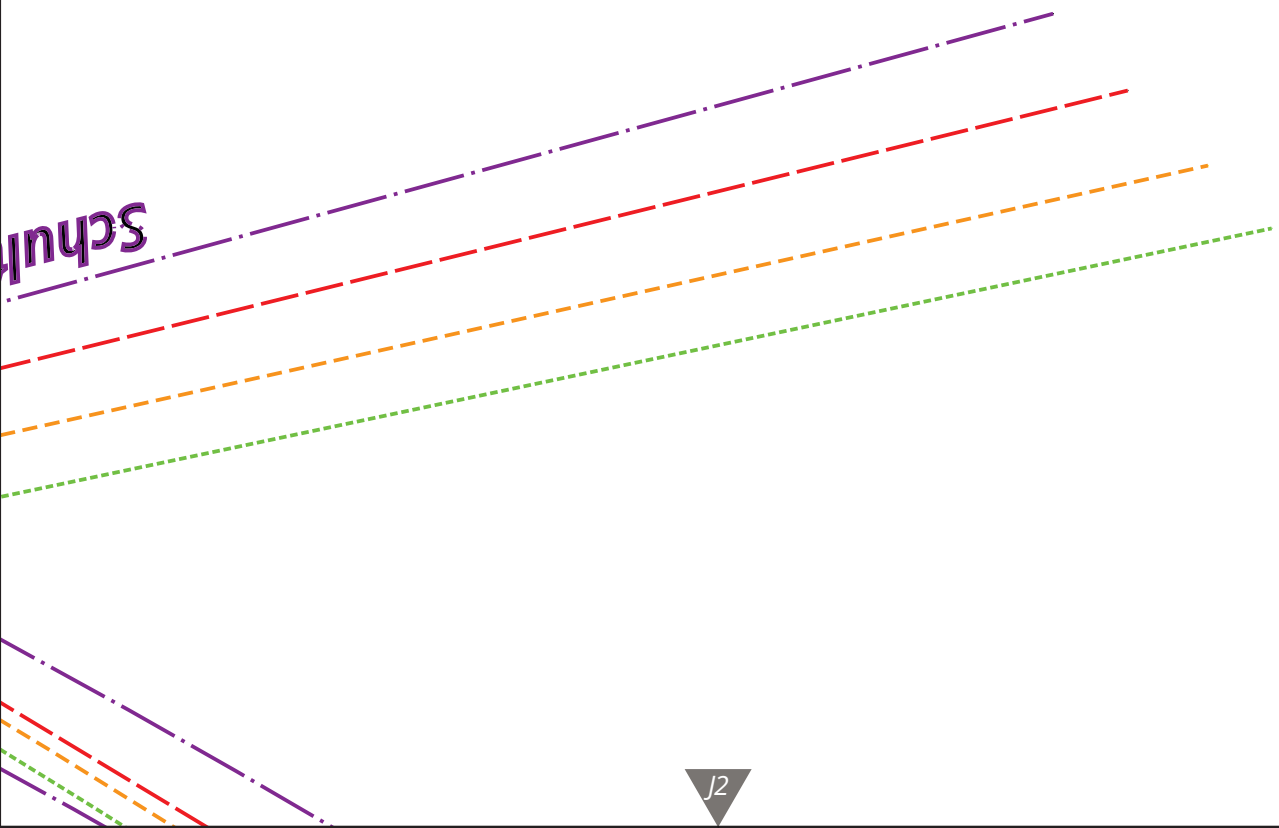
H2

5b

I1

I2

Schritt



J2

5c

Nahzugabe ist enthalten

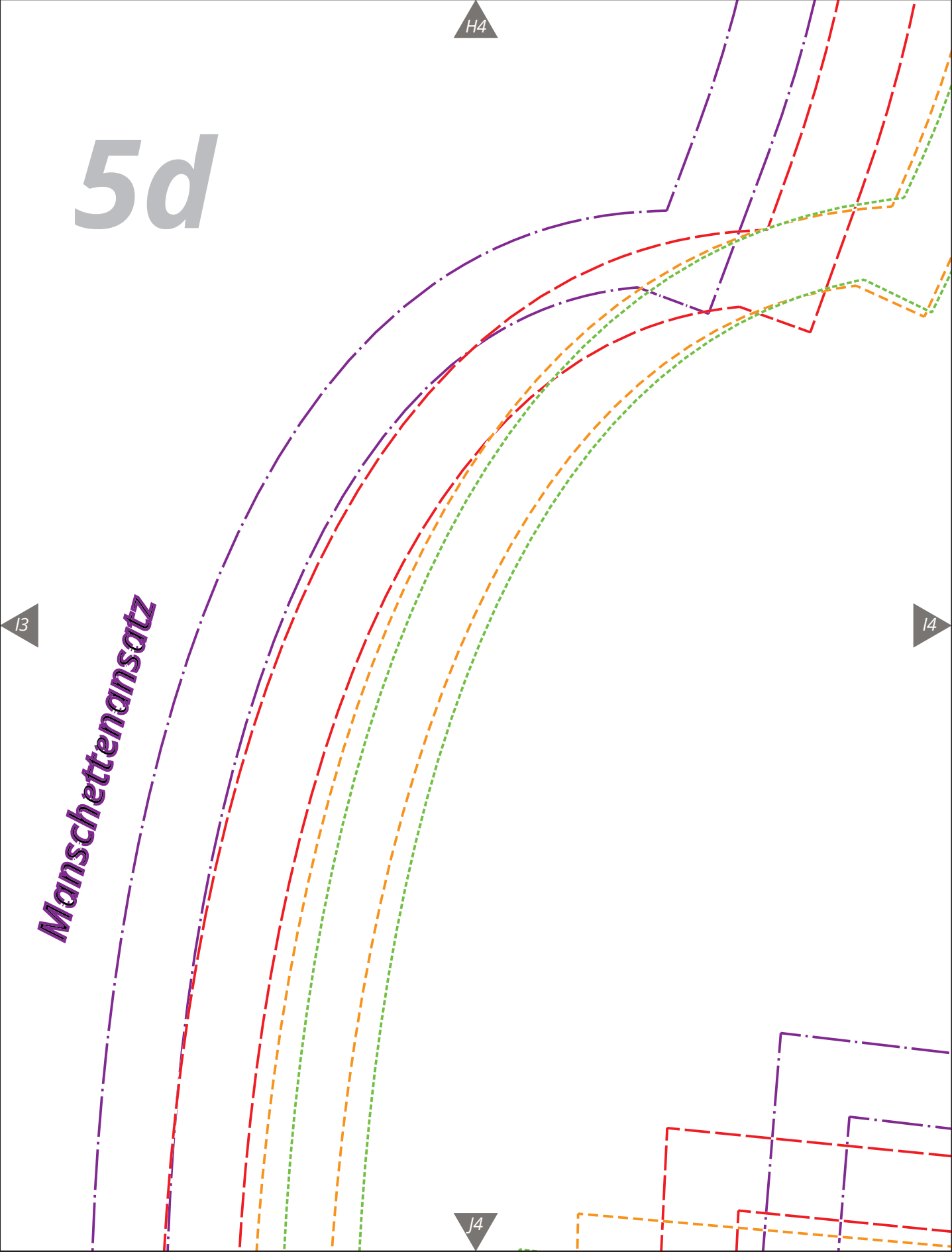
*1 x im Bruch zuschneiden
oder mit Rückennaht*

CAPE TOWN
Rücketeil



5d

Manschettenansatz



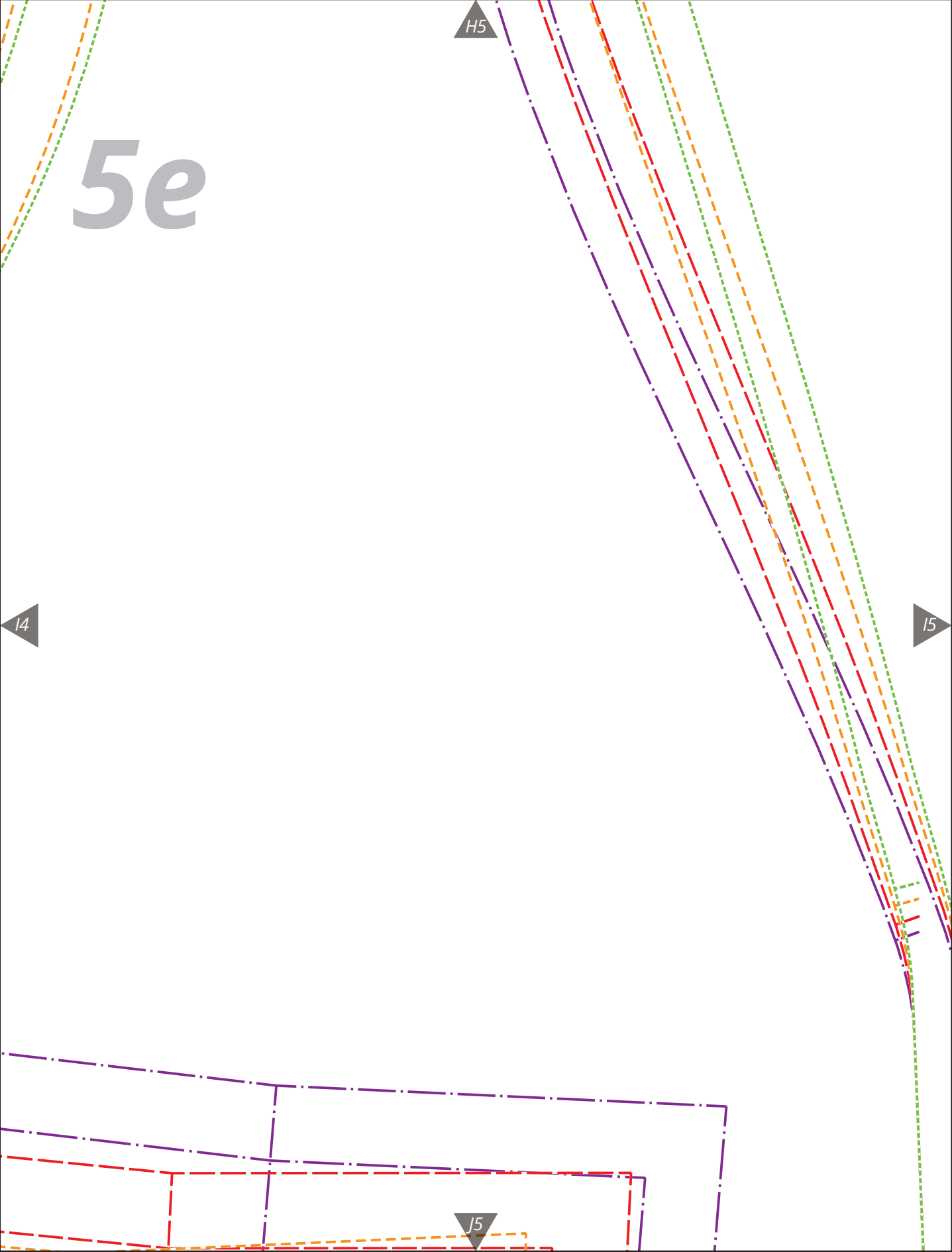
5e

H5

14

15

J5



H6

5f

D

CAPE TOWN
Beleg vorne

2 x zuschneiden
(1x gegengleich)

Nahtzugabe ist enthalten

EllePuls®
NÄH DEINEN STIL

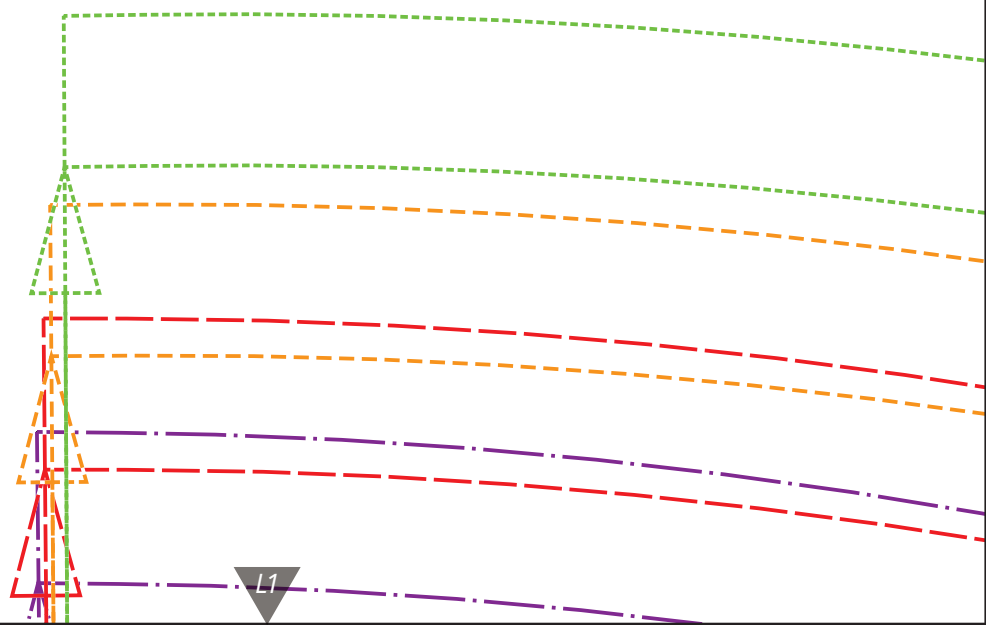
J6

15

J1

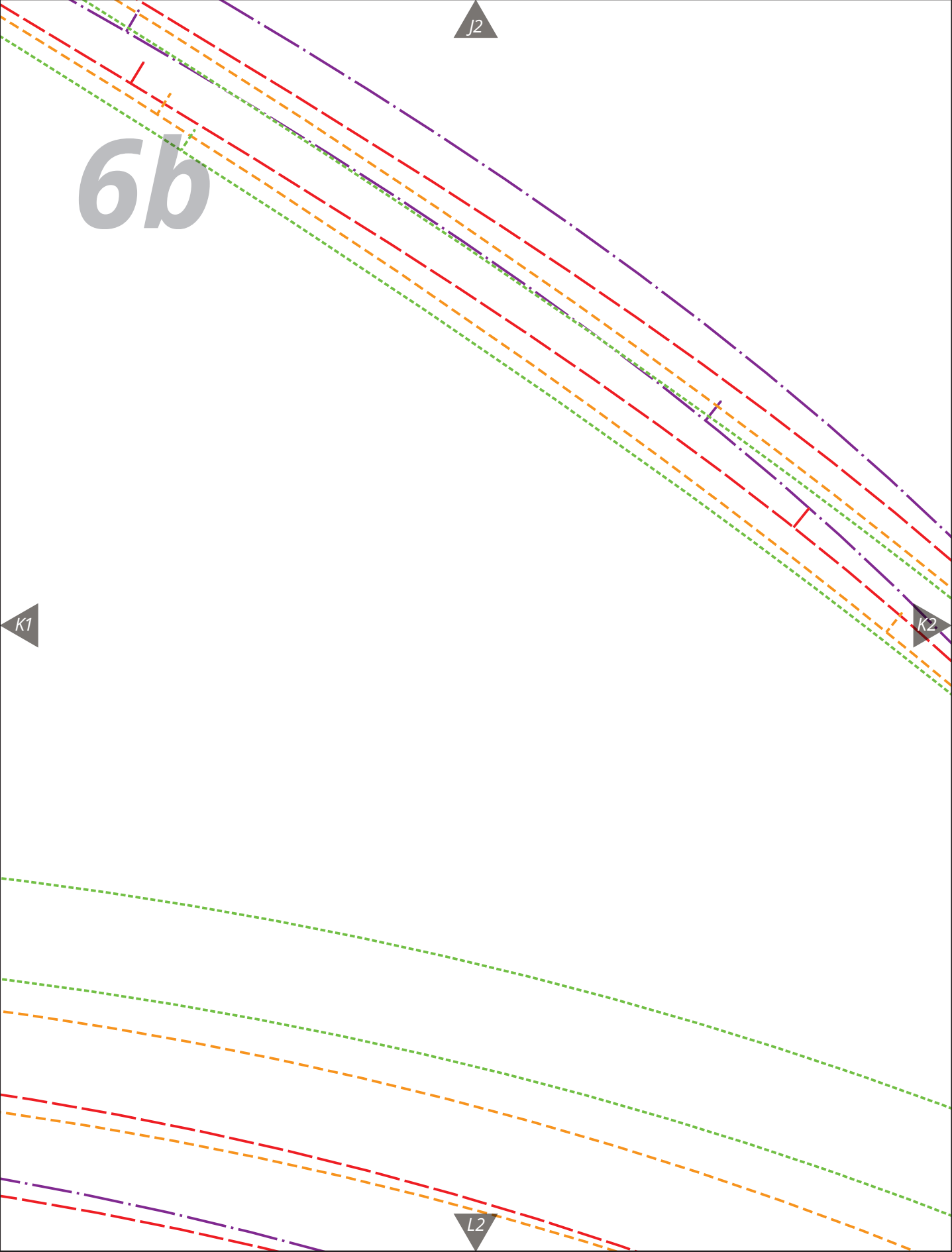
6a

K1



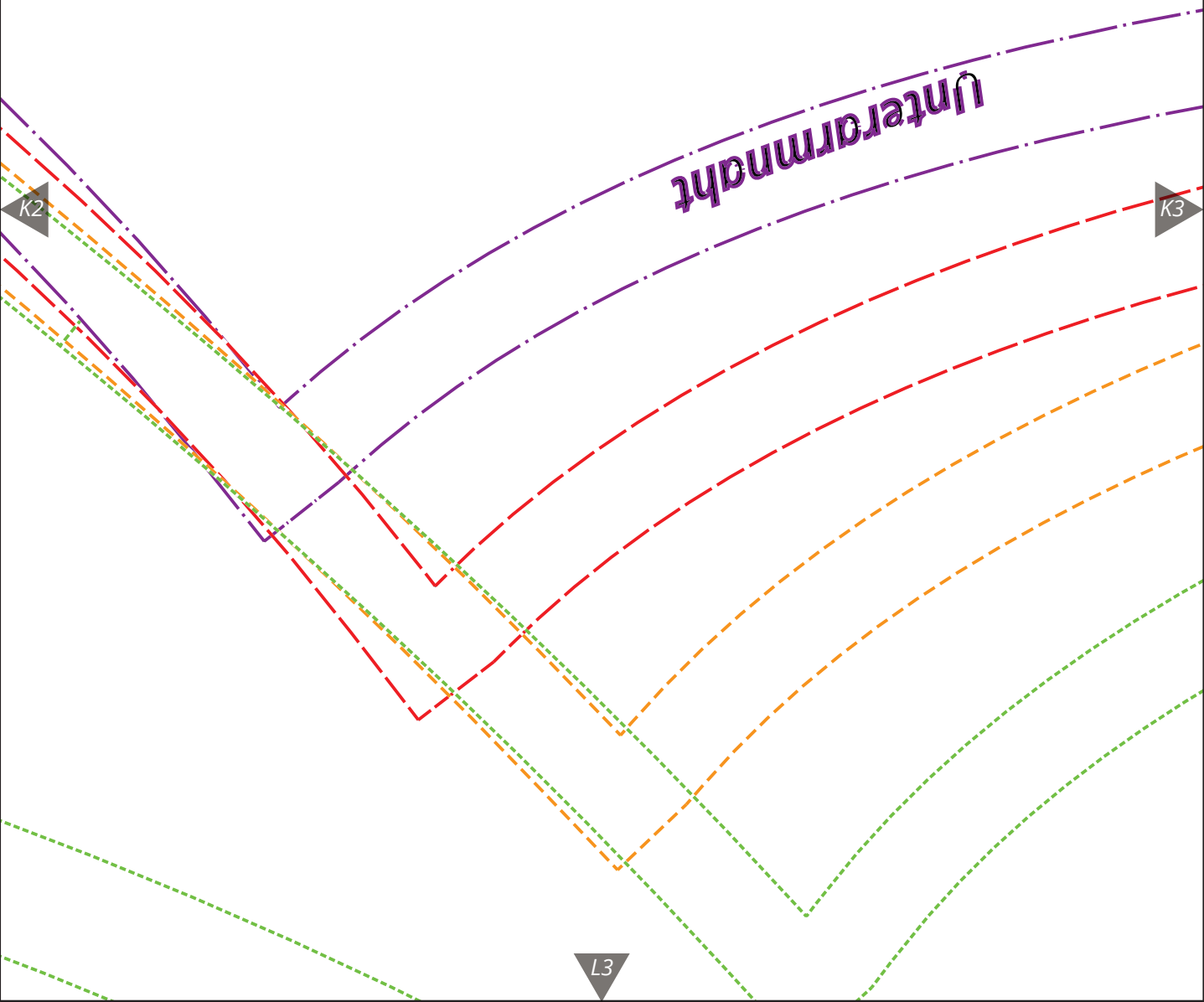
L1

6b



6c

J3



6d

J4

K3

K4

L4



6e

Umbruch

J5

K4

K5

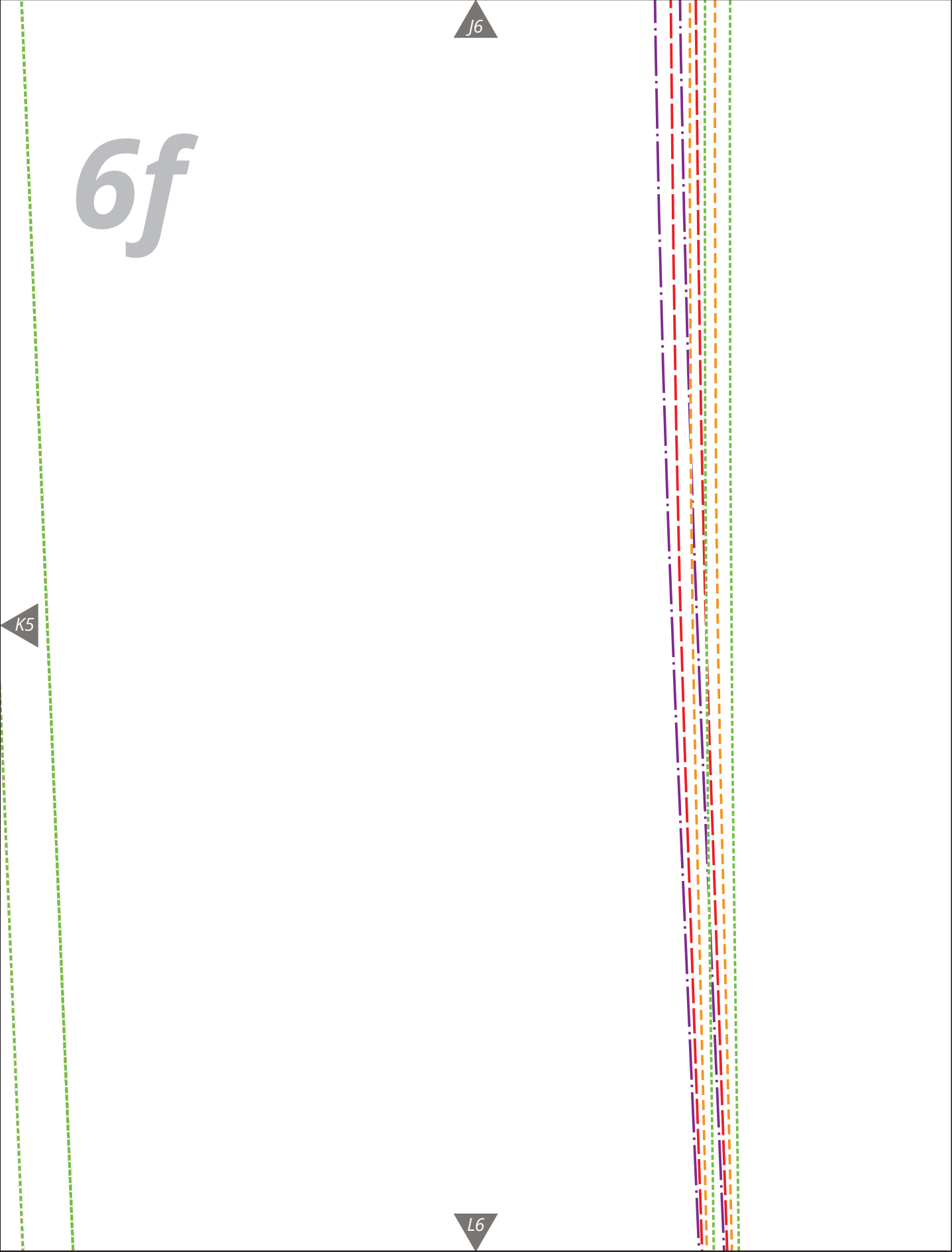
L5

J6

6f

K5

L6



7b

L2

NÄH DEINEN STIL
Cespa®

B

M1

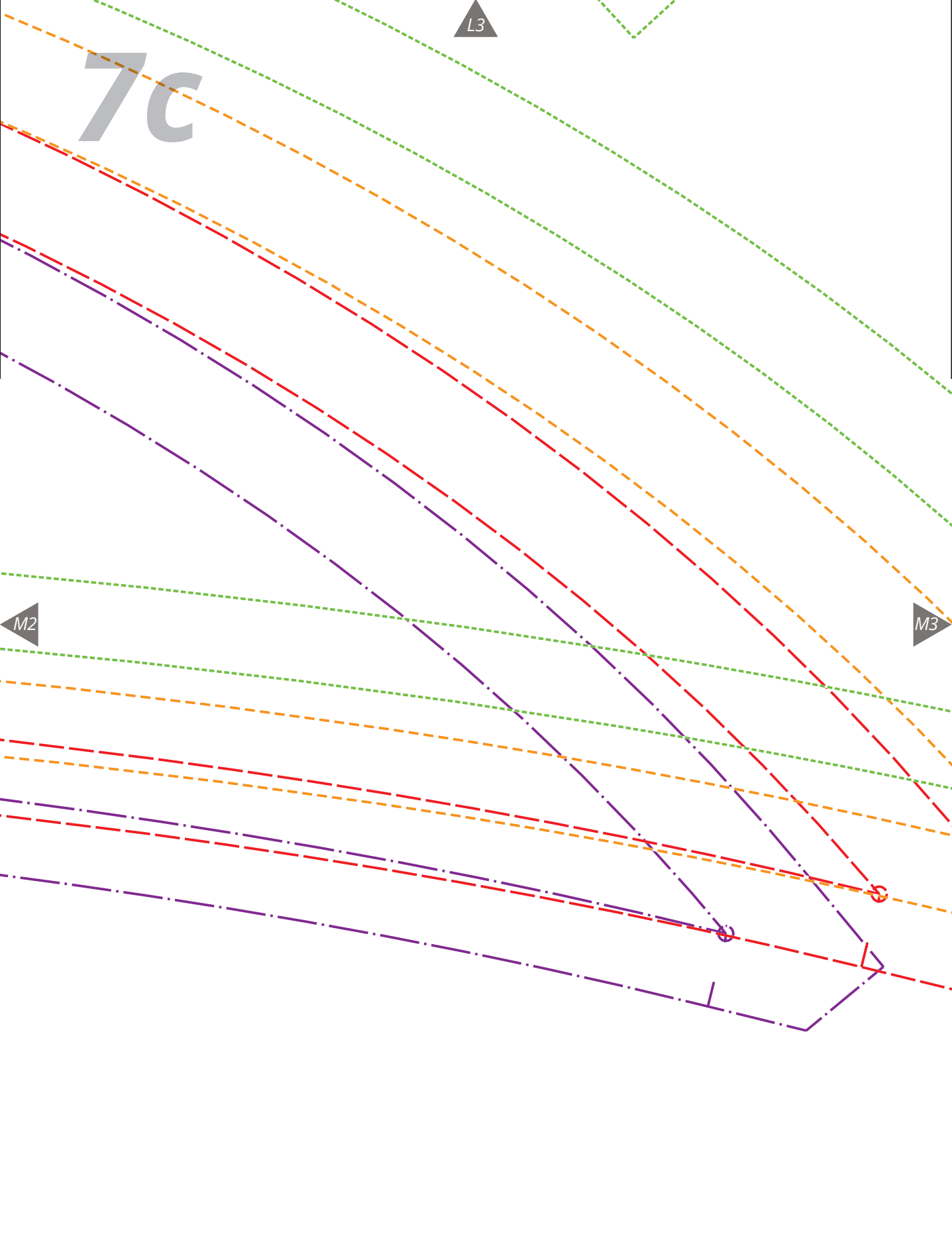
M2

7c

L3

M2

M3



7d

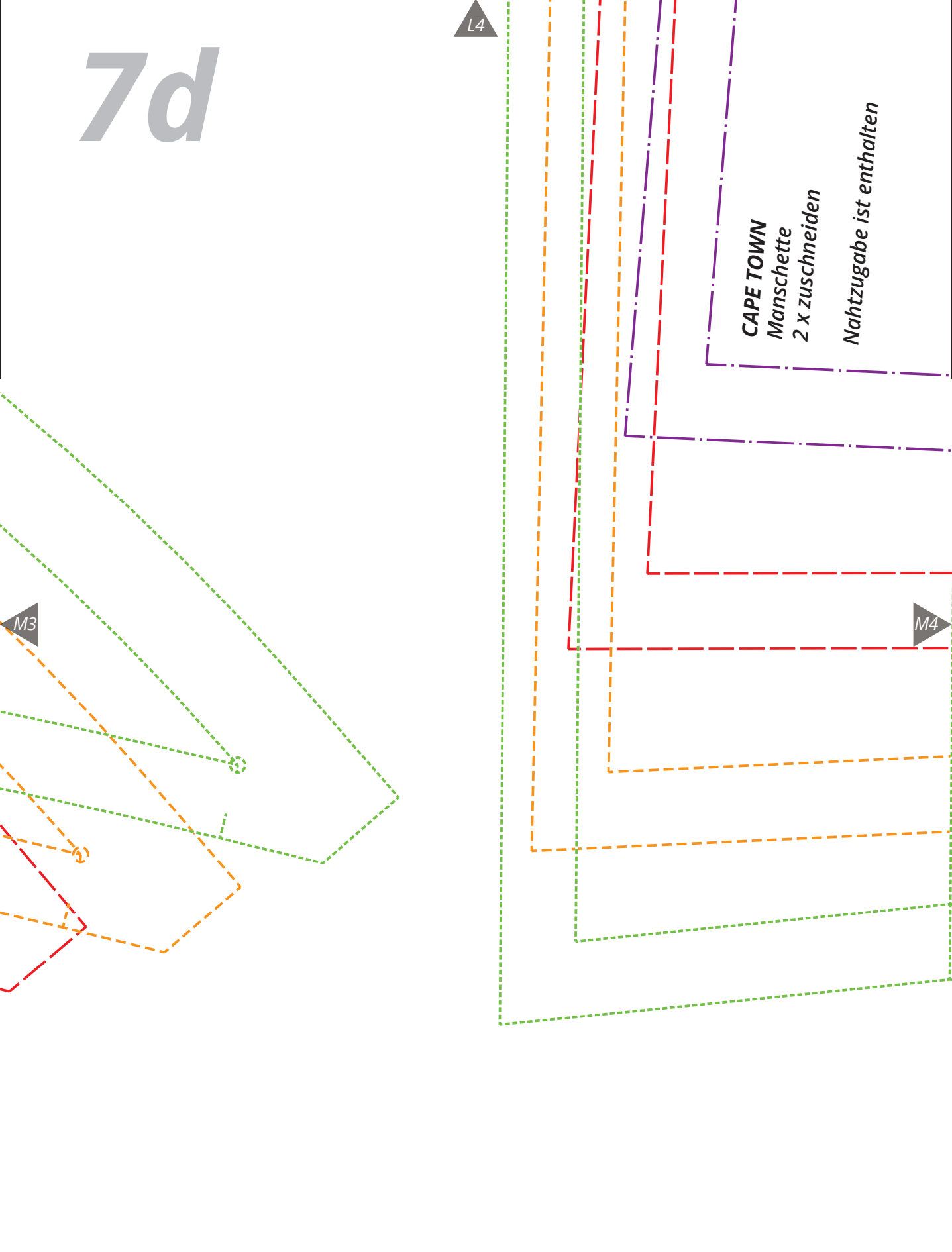
L4

M3

M4

CAPE TOWN
Manschette
2 x zuschneiden

Nahtzugabe ist enthalten



7e

L

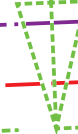
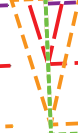
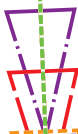
L5

M4

M5

L6

7f



M5

